

Historic, archived document

Do not assume content reflects current scientific knowledge, policies, or practices.

62.93

-Find.

LIBRARY
A 007 113
R. L. B. 1943

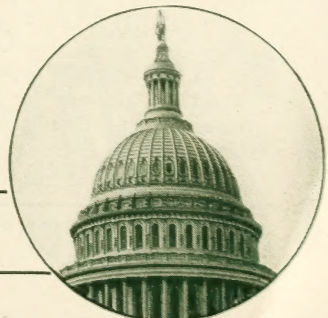


BOLGIANO'S

Selected BULBS · PLANTS · SEEDS

For 1943
FALL PLANTING

F. W. BOLGIANO & CO.
411 New York Ave. N. E. 607 E St. N. W.
WASHINGTON, D. C.

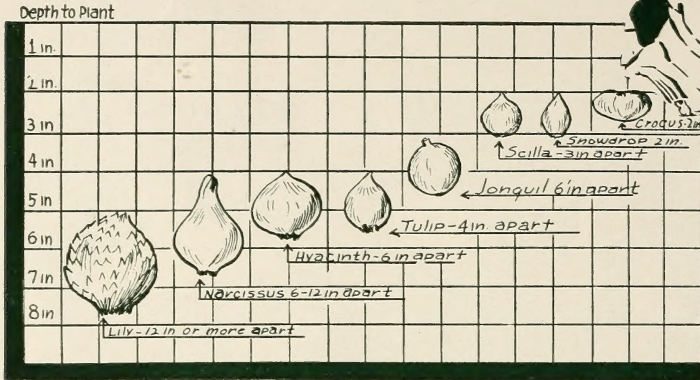


CAPITOL PARK LAWN GRASS *The Nation's Pride*

How to Plant Bulbs

SAVE THIS CHART

It shows the depth at which different bulbs should be planted



HOW TO PLANT

Outdoor Culture. Plant the bulbs as soon after September as possible, to enable the roots to make good growth before the cold weather sets in. They require a moderately rich soil. For best results, apply Loma, Vigoro, Sheep Manure or Bone-Meal. How far apart and how deep to plant the different bulbs is shown in the accompanying chart.

Indoor Culture. Plant hyacinths, tulips and narcissus in a sandy soil. For forcing, bulbs should be planted from September until November, the earlier they are potted the better. After they are potted they may be set outdoors and covered with a few inches of soil until freezing weather then brought into a cool cellar and watered occasionally. If not

possible to set them outdoors they may be placed in a cool cellar, covered with soil and watered regularly. When the roots are well developed the bulbs may be brought into a cool room where they will flower very quickly.

Growing Paper-White Narcissus in Water. Place a dozen bulbs in a shallow bowl, cover with small stones and keep filled with water. Place a few small pieces of charcoal in the bottom of the bowl to keep the water from fouling. Keep in a moderately temperate room. They require no care, no attention. They keep on growing and produce beautiful flowers in about six weeks. Plant bulbs at two-week intervals for a succession of blooms.

HOW TO ORDER

Address All Mail to F. W. Bolgiano & Co., 411 New York Ave. N. E., Washington, D. C.

Your Name and Address should be written plainly on the Order Blank which accompanied this catalogue.

Our Terms with customers not having an account are always cash with order. We do not send nursery stock C. O. D.

Money can be sent at our risk by Post Office or Express Money Order, New York or Chicago Draft, or by Registered Letter. We cannot hold ourselves responsible for cash sent loose in letters.

Postage and Express Charges. All Bulbs will be sent by Mail, charges prepaid, when ordered

at single or dozen rates. At 100 rates and over add 5 per cent to the cost of the bulbs to cover carrying charges.

Give Full Directions always, whether shipment is to be made by Freight, Express or Parcel Post.

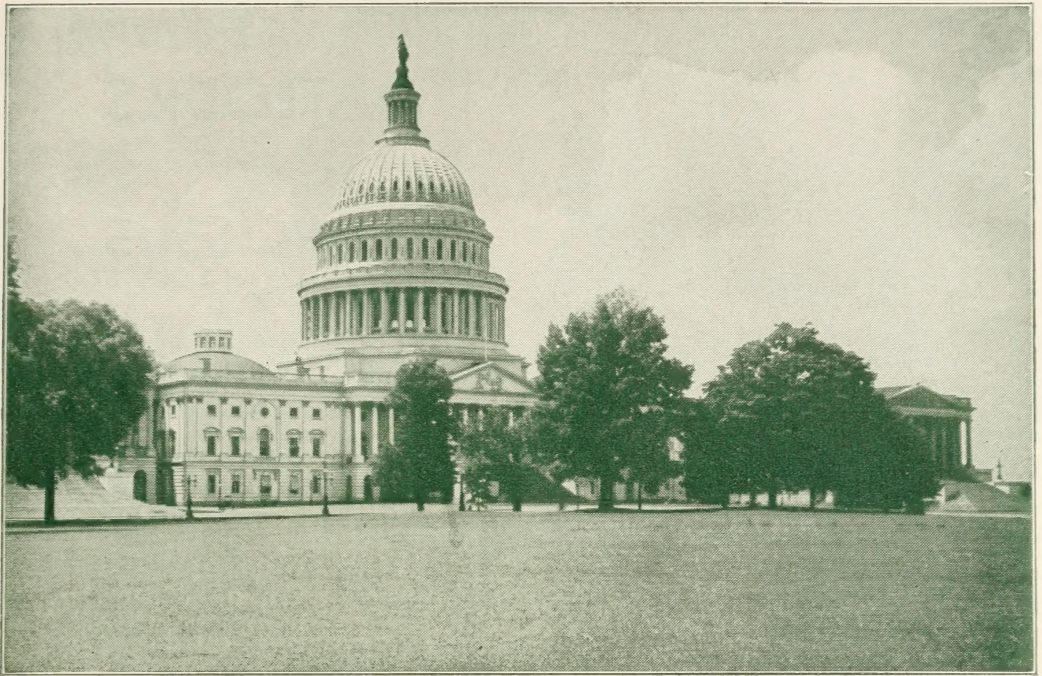
Express or Freight shipments should have the name of the station plainly given where different from the post office.

Non-Warranty. We give no warranty, expressed or implied, as to the productiveness of any seeds, bulbs or plants we sell, and we will not be in any way responsible for the crop. Our liability in all instances is limited to the purchase price of the seeds, bulbs or plants.

ATTENTION—DAHLIA GROWERS

In spite of unfavorable local weather conditions we are hoping to hold our 13th Annual Dahlia Show this fall, where we will take orders for next spring's delivery of tubers. Granted normal growing conditions and satisfactory winter storage, we should be able to deliver approximately 100 per cent of all orders. Date will be announced in newspapers if Show is held.

PHONE: FRANKLIN 4800 OR NATIONAL 0091



BOLGIANO'S "Capitol Park" LAWN GRASS SEED and Fall Seeding Makes Better Lawns THE NATION'S PRIDE

We can say with pride that it is the accumulated experience of fifty years that has made possible the development of the "Capitol Park" Lawn Grass Mixture. It contains a carefully selected well-balanced blend of high quality re-cleaned seed. Through the years we have learned that the finest lawns for the Washington area are those made of fine bladed deep-rooting grass. It is an easy matter to have a good-looking lawn in spring but it is the year-around test that determines the quality of good lawn seed. We are proud of our Capitol Park Lawn Seed and we believe you will find this leader in the Washington area the answer to your lawn problem.

Lb. 45c.; 3 lbs. \$1.25; 5 lbs. \$2.00; 25 lbs. \$8.75; 100 lbs. \$34.00

BOLGIANO'S "WHITE HOUSE" SHADY LAWN GRASS SEED

The Grass That Will Grow in Shady Places

To provide a turf for shady places which would match the turf of our Capitol Park Lawn Grass in the sun we experimented with grasses best adapted for growing in the shade until this formula was perfected. The resulting White House Shady Lawn Seed has removed cause for worry about those once bad places under trees.

Lb. 60c.; 5 lbs. \$2.15; 25 lbs. \$12.00; 100 lbs. \$45.00

Prices quoted on grass seed do not include postage. See page 2 for Parcel Post rates. If postage is included with order, seed will be sent by Parcel Post, otherwise shipment will be made by Express Collect.

BOLGIANO'S "FAIRGREEN" LAWN GRASS SEED

A Superior Mixture with Creeping Bent

Selecting grasses capable of producing a dense velvety lawn and resistant to dry summer weather, we believe we have in Fairgreen a permanent turf mixture which is unsurpassed, especially on slopes and terraces.

Lb. 70c.; 5 lbs. \$3.25; 25 lbs. \$15.00; 100 lbs. \$57.00

HORMONE-TREATED LAWN SEED

Treating seeds with Rootone Hormone Powder serves to augment the natural hormones which stimulate root-formation and top-growth. In our Hormone-treated Lawn Grass Mixture we use only the best varieties of seed, including Bent Grass.

Lb. 80c.; 5 lbs. \$3.75; 25 lbs. \$17.50



*The Best Thing
on Earth for Lawns
and Gardens*

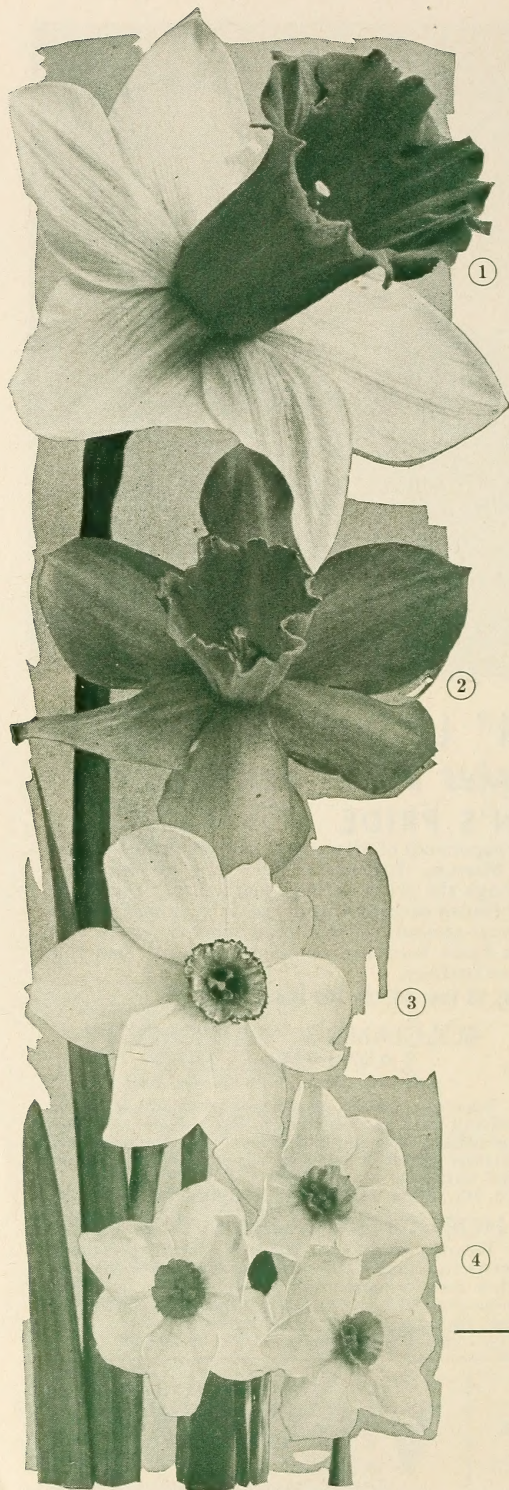
WRITE OR TELEPHONE FOR PRICES



**For
LAWNS
FLOWERS
SHRUBS
TREES
VEGETABLES**

Write for Our Free Booklet "How to Make and Maintain a Lawn"

American-Grown DAFFODILS or NARCISSUS



No garden is complete without a liberal planting of Daffodils or Narcissus. Perfectly hardy, they grow and produce abundantly in almost any position, sun or shade, moist or dry. They are equally suited to pot culture for winter flowering and are unsurpassed for naturalizing.

Note. The trumpet, crown, or cup is the center of the flower; the perianth is the surrounding row of petals or wings.

Large Yellow Single Trumpet Varieties

Emperor. This is one of the finest Daffodils in cultivation. Pure yellow trumpet of immense size; wide, overlapping, rich primrose perianth. 20 in. 18c. each; \$1.65 for 10; \$11.50 per 100.

King Alfred. One of the largest pure yellow Daffodils. Immense flowers of intense yellow; trumpet large and open with a deeply frilled mouth. Vigorous and free. 24 in. 18c. each; \$1.65 for 10; \$11.50 per 100.

Olympia. Perianth light chrome-yellow; high trumpet of deep chrome-yellow, heavily ruffled. Ranked as a leading cut-flower variety. 18c. each; \$1.65 for 10; \$11.50 per 100.

Tresserve. Large yellow perianth; rich yellow trumpet. Valuable exhibition variety. 18c. each; \$1.65 for 10; \$11.50 per 100.

Bicolor Single Trumpet Varieties

Spring Glory. Clear white informal-type perianth; large trumpet of deep yellow reflexing at the edge. A vigorous grower. 18c. each; \$1.65 for 10; \$11.50 per 100.

Van Waveren's Giant. Enormous flower with deep yellow trumpet, well opened; primrose perianth with outer petals exceptionally broad and inner ones usually slightly twisted, making the flower more graceful. 30c. each; \$2.75 for 10; \$20.00 per 100.

Victoria. Perianth creamy white; trumpet large, broad and clear yellow. A good forcing variety. 18c. each; \$1.65 for 10; \$11.50 per 100.

White Trumpet Varieties

Mrs. E. H. Krelage. Often referred to as the "White King Alfred." This is one of the finest pure white trumpet varieties. Very free flowering and a splendid exhibition variety. 30c. each; \$2.75 for 10; \$20.00 per 100.

TYPES OF DAFFODILS

1. LARGE TRUMPET DAFFODIL
2. MEDIUM TRUMPET DAFFODIL
3. POETICUS NARCISSUS
4. POETAZ NARCISSUS

DAFFODILS • *The First Call of Spring*

Double Varieties

Cheerfulness. Fine double, creamy white blooms of the cluster-flowering class; has faint suggestion of pale yellow at base. A splendid garden and exhibition variety. 15c. each; \$1.35 for 10; \$10.00 per 100.

Twink. A lovely, double, pale primrose-yellow Daffodil with bright orange center. 25c. each; \$2.25 for 10; \$17.50 per 100.

Medium Trumpet Varieties

Conspicuous. Barri. Broad, spreading pale yellow perianth; darker yellow cup, edged scarlet. Excellent for cutting. 10c. each; 95c. for 10; \$8.00 per 100.

Cræsus. Incomparabilis. A most striking Daffodil. Round, imbricated primrose perianth; widely expanded deep red crown. 16 in. 15c. each; \$1.15 for 10; \$9.75 per 100.

Diana Kasner. Barri. Pure white perianth with golden-yellow cup frilled blood-red. Very free flowering. 15c. each; \$1.15 for 10; \$9.75 per 100.

Sir Watkin. Incomparabilis. A popular variety and perfectly hardy. Flowers have a deep primrose-yellow perianth and a more deeply tinted yellow cup or trumpet. 20 in. 12c. each; \$1.10 for 10; \$9.00 per 100.

VICTORY ROCKETS. Incomparabilis. Primrose-yellow perianth; deep yellow cup densely frilled with deep orange; extra-large, long-lasting. Fine for garden and exhibition. 35c. each; \$1.00 for 3; \$3.00 for 10; \$6.50 for 25.

Narcissus Leedsii

Short Trumpet with White Perianth

Silver Star. Fine broad white perianth; wide, deep trumpet of creamy white. Free flowering. 20c. each; \$1.75 for 10; \$14.00 per 100.

Poet's and Poetaz Narcissus

Poeticus ornatus (Poet's Narcissus). A splendid flower with a pure white perianth and a white eye, margined bright crimson. A long-stemmed variety for garden and for forcing. 10c. each; 95c. for 10; \$7.50 per 100.

Poeticus recurvus (Pheasant's Eye). Pure white perianth; cup, deep orange-red. Late flowering; excellent for massing. 10c. each; 95c. for 10; \$7.50 per 100.

Poetaz, Laurens Koster (Cluster-flowered Narcissus). Clusters of 5 to 7 large, pure white blooms with orange-yellow cups. 12c. each; \$1.10 for 10; \$8.50 per 100.

Special Narcissus Mixture

A special mixture of all varieties for growing in masses or for mixed borders or among the shrubbery. A clump of these planted in your garden will produce a fine lot of flowers for table and house decorations. Particularly hardy and will flourish and increase for years. 75c. for 10; \$5.75 per 100.

Paper-White Narcissus

Dishes of these, grown in pebbles and water, can be had in bloom continuously from Thanksgiving until Easter.

Medium-size bulbs, 7c. each; 60c. for 10; \$5.00 per 100.

Large-size bulbs, 10c. each; 85c. for 10; \$7.00 per 100.

Sweet-scented Jonquils

Campernelle rugulosus. Large rich yellow flowers, borne very freely. Very effective in deep pockets near the base of rockeries. 12c. each; 95c. for 10; \$8.00 per 100.



NARCISSUS AND TULIP PLANTING



May-flowering Tulips in all shades of the rainbow are a welcome sight in the spring garden

Darwin Tulips—May-flowering

The splendid form, exquisite coloring and enormous size of the Darwins make them the favorite of all Tulips. They belong to the May-flowering or late-blooming class and produce their gigantic flower-cup on long, stiff stems, 20 to 30 inches above the broad foliage.

- Afterglow.** Rosy orange, salmon-tinted margins. 26 in.
- Baronne de la Tonnaye.** Vivid rose-pink, shading paler toward outer edges of petals. 26 in.
- Bartigon.** Carmine-red. 26 in.
- Bleu Aimable.** Bright violet-purple, shaded steel-blue.
- City of Haarlem.** Cardinal-red, with distinct blue base; large.
- Clara Butt.** Bright salmon-rose; lovely color and shape. 22 in.
- Dream.** Soft rosy mauve on heliotrope ground. 27 in.
- Farncombe Sanders.** Brilliant rose-scarlet. 26 in.
- Jubilee.** Deep rich blue, shaded purple; large; egg-shaped flowers. 15c. each; \$1.25 for 10; \$9.95 per 100.
- La Tulipe Noire.** Large; glossy black, highlights maroon.
- Madame Krelage.** Bright rose, light border; large flower.
- Pride of Haarlem.** Brilliant carmine-rose; very large. 26 in.
- Princess Elizabeth.** Soft lilac-rose, edges of paler shade. 26 in.
- Rev. H. Ewbank.** Soft lavender-violet. 25 in.
- Sundew.** The fringed crimson Darwin.
- William Copland.** Fine forcing variety. Delicate lavender.
- William Pitt.** One of the largest brilliant carmine. 24 in.
- Yellow Giant.** New golden yellow Darwin. 28 in.
- Zwanenburg.** Large; pure white.
- Darwin Tulips, Bolgiano's Superior Mixture.** 90c. for 10; \$6.95 per 100.

All Darwin Tulips, except where noted, 12c. each; 95c. for 10; \$8.50 per 100

TULIPS *make a parade of color in the Garden*

Cottage Tulips—May-flowering

Carrara. Purest white; ivory stamens.

Dido. Orange-red changing to orange-yellow. 30 in.

Inglescombe Pink. Delicate rose-pink, tinted salmon. 22 in.

Inglescombe Yellow. Perfect flowers of full, rich yellow. 22 in.

Mrs. Moon. Deep yellow reflexed pointed petals. 25 in.

Picotee (Maiden's Blush). White margined carmine-rose.

Red Rocket. Tall. Brilliant scarlet. 28 in.

Rosabella. Luminous rose with broad pink edge, inside beautiful shell-pink on creamy white base.

Cottage Tulips, Mixed. 95c. for 10; \$7.50 per 100.

All Cottage Tulips, except where noted, 12c. each; \$1.10 for 10; \$8.50 per 100

Breeder Tulips—May-flowering

These fine old May-flowering Tulips are exceedingly popular. They are very similar to the Darwins in their tall, strong growth, but with even larger flowers. They bloom about the same time as the Darwins, but have an entirely different range of colors, comprising bronze, terra-cotta, orange, brown and other artistic tones.

Bronze Queen. Buff, tinged bronze.

Dom Pedro. Coffee-color.

Louis XIV. Rich dark purple with a broad margin of golden bronze.

Panorama. Reddish mahogany. Very large forcer.

Prince of Orange (Sunset). Terra-cotta with orange edge.

Yellow Perfection. Olive-yellow color.

All Breeder Tulips, 12c. each; \$1.10 for 10; \$8.50 per 100

Single Early Tulips

Ready for Delivery in September

Couleur Cardinal. Rich, glittering cardinal-red.

Cramoisi Brillant. Large; glowing scarlet with yellow base.

De Wet (Fireglow). Golden yellow flushed with orange-scarlet.

Diana. Pure glistening white.

Fred Moore. Brilliant apricot-orange shaded scarlet.

Keizerskroon. Bright red with broad golden yellow border.

Prince of Austria. Clean orange-red; sweet scented.

Prosperity. Fine rose-pink.

Rising Sun. Deep golden yellow.

Van der Neer. Handsome violet-purple blooms. Long stems.

Yellow Prince. The best bright yellow.

Single Early Tulips, Mixed. 90c for 10; \$7.25 per 100.

All Single Early Tulips, except where noted, 12c. each; \$1.10 for 10; \$8.50 per 100

Double Early Tulips

Boule de Neige. Large peony-like, pure white flower. 10 in.

Electra. Rosy violet. 12 in.

Mr. Van der Hoef. Pure golden yellow; large flowers. Good forcer.

Murillo. Delicate rose-pink, flushed white.

Orange Nassau. Orange-red. A sport from that popular variety, Murillo.

Peach Blossom. Deep rosy pink, deepening with age to a deep rose.

Tearose. Soft yellow, flushed salmon.

All Double Early Tulips, 12c. each; \$1.15 for 10; \$9.50 per 100

Parrot Tulips

Fantasy. Beautiful warm pink that delights everyone. An outstanding rare variety. 15c. each; \$1.15 for 10; \$9.75 per 100.



TULIP, DE WET

Spring-Flowering BULBS



GRAPE HYACINTH

*The first
to Bloom
in the
Spring!*



SNOWDROP (*Galanthus*)

For the Garden, Rock-Garden and Naturalistic Planting

Spring bulbs are among the most eagerly awaited flowers of the whole garden, for they announce a new growing season. They may be planted among perennials, at the edge of a shrub border, or on a grassy slope where they can produce a naturalistic effect. They add a great deal to the spring rock-garden.

CHIONODOXA (Glory-of-the-Snow). Brilliant sky-blue flowers that come soon after the snow is gone. They require no further care when once planted. 8c. each; 70c. for 10; \$6.00 per 100.

CROCUS. One of the earliest spring flowers. Purple, striped, white or yellow. 10c. each; 90c. for 10; \$7.50 per 100.

ERYTHRONIUM (Dog's-Tooth Violet), **Mixed.** Charming woodland plants with nodding lily-like blooms that vary from greenish white to pure white, pink, lavender, lemon-yellow and orange-yellow. Foliage mottled brown in some sorts. These interesting spring flowers succeed in any light soil, especially in partial shade, and profit by a winter mulch of leaves or litter. Plant about 4 inches deep. Good mixture of colors. 8c. each; 70c. for 10; \$6.00 per 100.

IXIA (African Corn Lily). These charming flowers, with their rich and varied hues, make a brilliant display in the spring when planted outdoors in a protected place. They may be grown indoors for winter blooms also. 8c. each; 70c. for 10; \$6.00 per 100.

MUSCARI (Heavenly Blue Grape Hyacinth). Numerous spikes of light blue flowers during April. Can be planted in masses or in the rock-garden, in either shade or sun. 8c. each; 70c. for 10; \$5.50 per 100.

SCILLA campanulata (Wood Hyacinth). Bears bell-like flowers on 15-inch spikes during early May. Does very well in shady situations. White, Blue, or Rose. 7c. each; 65c. for 10; \$5.00 per 100.

SCILLA sibirica (Squills). Exquisite rich blue flowers in early spring. A charming effect may be had by planting in conjunction with yellow crocus, chionodoxas and snowdrops. 8c. each; 70c. for 10; \$6.00 per 100.

SNOWDROPS. In early spring a snowy white bed of graceful Snowdrops is a lovely sight. They may also be used effectively in the center or at the edge of a bed with scillas or chionodoxas by intermingling them.

SNOWDROP, Single. Large lovely single white bells. 8c. each; 70c. for 10; \$6.00 per 100.

HARDY LILIES *for Fall Planting*

Most Lily bulbs being of late maturity are not ready for delivery until October and November. It is advisable to prepare the bed in early autumn and cover with 3 to 4 inches of mulch. This will prevent freezing and will enable you to plant bulbs safely on arrival.

Candidum (Madonna Lily). Produces a large mass of snow-white flowers on long stems, giving forth a delightful fragrance during May and June. Base-rooting. Plant as early as possible in the fall, covering with not more than 3 inches of dirt. *September delivery*. Extra-fine large bulbs, 50c. each; \$1.40 for 3; \$4.95 for 10.

Pardalinum giganteum (Sunset Lily). This beautiful Lily with its large racemes of yellow flowers, 14 inches across, tipped with bright red and spotted with brown, is a real treasure as it is easily grown and thrives in full sun or partial shade. It often reaches a height of over 8 feet with broad whorls of foliage. Blooms in July. Plant about 8 inches deep. *October delivery*. 40c. each; \$3.50 for 10.

Philippinense formosanum. Large, fragrant white blooms tinted rose on outside. Perfectly hardy, it blooms in September. Does best in a sunny location. 3 to 4 ft. Stem-rooting. Plant 8 inches deep. *October or November delivery*. 40c. each; \$3.50 for 10.

Regale (Regal Lily). A royal beauty. Flowers white, slightly suffused with pink, with a beautiful shade of canary-yellow at the center, blending our part way up the trumpet. The fragrance is fascinating. A splendid hardy Lily for the garden, flowering in July. Well-grown bulbs often produce 5 to 8 blooms. Stem-rooting. Plant 6 inches deep. *October or November delivery*. Large bulbs, 20c. each; \$1.75 for 10. Jumbo bulbs, 30c. each; \$2.75 for 10.

Tenuifolium (Coral Lily). Early-flowering. Beautifully shaded coral-red flowers and finely cut foliage. The petals are strongly recurved and of a waxy texture. Ideal for that shaded section of your rock-garden. Stem-rooting. Plant 4 inches deep. Flowers in June. 20 in. 20c. each; \$1.90 for 10.

Tigrinum splendens (Tiger Lily). The finest form of Tiger Lily with the richest color. The large shapely flowers are of a rich dark salmon-orange spotted with glossy black. This Lily is very robust in habit and of easy culture. Blooms nearly all summer. Stem-rooting. Plant 6 to 8 inches deep. *October or November delivery*. 30c. each; \$2.75 for 10.

Lilies are an important feature of the summer garden. They have a patrician air about them that no other flower can quite duplicate.

The varieties we offer are not difficult to grow in the home garden. Plant them with hardy perennials or in front of a shrub border.



TIGER LILY



REGAL LILY

a well-drained location. They will grow in the sun, but light shade is better, with a ground-cover over the roots to keep the soil moist.



MADONNA LILY

In setting out your Lily bulbs be sure to dig the holes large enough. Absolutely essential for all Lilies is

CALLAS • FREEZIAS • OXALIS

for Indoor Planting



CALLA LILY, YELLOW

Hole-in-One PLANT SETTER and BULB PLANTER

Removes the soil and makes a perfect planting hole for all kinds of bulbs and young plants. Once tried, no gardener will do without it.



60c each

CALLA LILY, White (Æthiopica). Pure white blooms of an attractive, unusual form and one of our best window plants. Pot bulbs in 6 to 8-inch pots as soon as received. Give an abundance of water, light, and heat and the results will be very satisfactory. 35c. each; \$2.85 for 10.

CALLA LILY, Yellow (Elliottiana). The Yellow Calla. Large, rich, deep golden flowers often 4 to 5 inches across at the mouth. Habit of growth and foliage like the old favorite White Calla except that the leaves of Elliottiana are spotted with white. Makes a very distinctive potted plant that is interesting to watch as its blooms unfurl. Ready in November. 35c. each; \$2.75 for 10.



FREEZIA

AMARYLLIS

Amaryllis bulbs planted in October or November should come into bloom in March. The huge trumpets on their tall, strong stems are very cheery in late winter, and no trouble to grow. Mixed colors only. Jumbo bulbs, suitable for planting in a 6-inch pot, 60c. each (by mail, 70c.); \$1.65 for 3; \$3.00 for 6.



AMARYLLIS

OXALIS, Mixed. Suitable for pot-culture and winter blooming. Large pink, white, lavender, and yellow flowers, held well above dwarf sturdy growth. Keep close to light to prevent foliage growing too long. Bulbs, 5c. each; 45c. for 10.

FREEZIA, Improved Purity. Produces large sprays of snow-white, extremely fragrant flowers. Plant the bulbs in a mixture of loam and coarse sand, with a little bonemeal. Monster bulbs 6c. each; 55c. for 10; \$5.00 per 100.

FREEZIAS, Rainbow Mixture. Clusters of yellow, blue, violet, mauve, pink and lavender flowers. 50c. for 10; \$4.25 per 100.



PEONIES

PEONY ROOTS

Peonies are undoubtedly one of the most satisfactory of the herbaceous perennials. Once established they require little care and reward the gardener with an abundance of fragrant and beautiful colored blooms of great size each spring.

Avalanche. White. Late.

Baroness Schroeder. French white, changing to pure white.

Felix Crousse. Ruby-red. Midseason.

Georgiana Shaylor. Rose-pink. Late.

Karl Rosenfield. The supreme red.

Marie Crousse. Soft salmon-pink.

Richard Carvel. Cherry-red. Early.

Sarah Bernhardt. Deep pink.

Walter Faxon. Coral-pink.

All above Peonies, 75c. each
3 of any one variety \$2.00; \$7.50 per doz.

Cherry Hill. Velvety garnet-red.

La Lorraine. Large; creamy-white.

Mons. Jules Elie. Large; early; pink.

Primevere. Nearest to yellow.

Therese. Marvelous soft pink.

All above Peonies, \$1.00 each
3 of any one variety for \$2.75; \$10.50 per doz.

IRIS • Queen of Perennials

Iris Germanica (Flag Iris)

Alta California. Tall; yellow.

Autumn King. Blue-purple bicolor.

Clara Noyes. Orange-red.

Dauntless. Red-purple.

Dolly Madison. Mauve and yellow.

Eleanor Roosevelt. Deep violet.

Freida Mohr. Large; deep pink.

Jean Siret. Yellow. Dwarf.

King Juba. Old-rose, edged carmine.

Laddie Boy. Deep purple.

Pink Satin. True pink self.

Pluie d'Or. Deep yellow.

Princess Beatrice. Light blue. An old favorite.

San Francisco. White, edged blue.

Sunlight. Soft yellow.

Talisman. Blend of red, yellow, pink and chamois.

William Mohr. Large violet blooms veined gray.

All Iris Germanica, 30c. each
3 of any one variety 75c.; \$2.50 per doz.

Iris Sibirica (Siberian Iris)

Perry's Blue. Clear blue. Stout stems.

Snow Queen. A beautiful white. Very free flowering.

All Iris sibirica, 30c. each
3 of any one variety 75c.; \$2.50 per doz.

Iris Pumila (Miniature Flag)

A dwarf Iris that is ideal for the rock-garden. Blooms during March and April.

Fairy. Pale blue.

La Fiancee. White.

Orange Queen. Orange.

Sambo. Deep blue.

Stewart Hybrid. Yellow.

All Iris pumila, 25c. each; 1 each of 5 varieties for \$1.00

Iris Kaempferi (Beardless Iris)

Blue Bird. Lovely blue flowers.

Cloud Dress. Double; white, veined mauve.

Dominator. Deep blue; single.

Doris Childs. White, rosy purple veins.

Gold Bound. Double; white, gold-banded center.

Mahogany. Mahogany-red.

Margaret Hendrickson. Blue-violet, white center.

Melpomene. Soft blue; double.

Pink Pearl. Pearly pink; double.

Purple and Gold. Violet-purple, golden throat; double.

Princess C. D. Rohan. Dark purple.

Red Riding Hood. Single; red.

Rosa Anna. Ivory-white, ruby veins.

Templeton. Reddish violet mottled with white.

T. S. Ware. Violet-red, white center.

Victor. Light blue, blue veins.

All Iris Kaempferi, 35c. each
3 of any one variety 90c.; \$3.50 per doz.

Dutch Iris

One of the most easily grown bulbous plants. Place bulbs 4 to 6 inches deep in good sandy loam. Blooms in early June; lovely for cutting.

Imperator. Brilliant deep blue with a golden yellow blotch on each standard.

Wedgwood. Graceful large flowers of a beautiful even blue color. Easy to force.

Yellow Queen. Both the standards and falls are bright golden yellow.

Mixed Colors. A well-blended mixture.

All Dutch Iris, 7c. each; 60c. for 10

Spanish Iris

Known as "Orchids of the Hardy Flower Garden." They grow from 18 to 24 inches high and produce their exquisite airy blooms during the last of May and through June. Plant the latter part of September. Mixture contains all colors. Bulbs, 50c. for 10; \$4.00 per 100.

HARDY PERENNIAL and BIENNIAL PLANTS

We supply large field-grown plants, ready to be transplanted, after August 15.

PRICES: Unless otherwise priced, all plants are sold at 30c. each; 3 of any one variety 75c.; 6 of any one variety at doz. rate; \$2.50 per doz.

POSTAGE ON PLANTS. Add for postage and packing: Single plants 10c.; 3 plants 20c.; 6 plants 30c.; 12 plants 40c. We accept no responsibility for delays or conditions that may prove injurious to the contents.

Dwarf Asters

Very desirable for rock-gardens and borders. Free-flowering.

Acris nanus. Compact bushes with lavender-blue flowers. Late August and September. 12 in.

Alpellus, Triumph. Sparkling blue daisies during June and July on a fine hardy plant. 8 in. 50c. each; \$1.25 for 3.

Amellus, King George. Wide bushes 18 inches high covered with large blue flowers from July to September.

Mauve Cushion. Pale mauve-colored flowers during October. 6 to 8 in.

Snowsprite. Semi-double white flowers. 10 in. September.

CHRYSANTHEMUM PLANTS

Single-flowering Varieties

Astrid. Pink.

Louise Schling. Salmon-red.

Orange Wonder. Orange.

Stellaris. Buttercup-yellow.

The Chief. Bright scarlet and gold.

Button Varieties

Early Bronze. Bronze.

Irene. A fine white.

Jewel. Very popular pink.

Pygmy Gold. Golden yellow.

Treasure Trove. Clear yellow.

Pompon Varieties

Capt. R. H. Cook. Rose petals, tipped golden bronze.

Judith Anderson. Buttercup-yellow.

Goblin. Bronze, shading to gold.

Mrs. H. Harrison. Clusters of pink flowers.

Ourray. Bronze with coppery glow.

White Doty. White.

Large-flowering Varieties

Burgundy. Rich cerise-crimson.

Granny Scovill. Coral-bronze.

King Midas. Soft yellow.

Rose Glow. Old-rose.

Tasiva. White.

The Moor. Amaranth-purple.



CHRYSANTHEMUM

Alyssum (Basket of Gold)

Saxatile compactum. Broad masses of bright yellow flowers in early spring. For rockeries or front of borders. 1 ft.

Anemone Japonica (Windflower)

Alice. Large, semi-double flowers of La-France-pink. Grows well in shade. A good cut-flower. 2 ft.

Whirlwind. Similar to above, but pure white.

Aquilegia (Columbine)

One of the most valuable of the early-flowering perennials.

Chrysantha (Golden Columbine). Yellow flowers with long spurs.

Crimson Star. Large flowers with rich crimson outer petals and pure white centers. Spectacular.

Mrs. Scott Elliott's Strain. Pastel shades.

Rose Queen. Pink; long-spurred.

-Asters (Michaelmas Daisy)

Lovely daisy-like flowers, 4 to 5 feet high, blooming September and October.

Barr's Pink. Deep pink flowers with showy gold and bronze centers.

Beechwood Challenger. Glowing crimson. Splendid new red Aster with great promise. 3 ft. 35c. each; 90c. for 3.

Blue Eyes. Large pure violet-blue flowers with small yellow eyes.

Blue Plume. Stately plants with fine spikes covered with deep purple almost double flowers. Showy variety. 2 ft. 35c. each; 90c. for 3.

Frikarti, Wonder of Staefa. A splendid hardy Aster with large lavender-blue flowers on 12 to 18-inch stems. Blooms over a long period. 2 to 2½ ft. 35c. each; 90c. for 3.

Harrington's Pink. Large flowers of clear soft pink. A beautiful Aster. 4 ft. 40c. each; \$1.00 for 3.

Hybridus luteus. Lovely small bright yellow flowers in clusters on 18 to 24-inch stems. Blooms July to August.

Mt. Everest. Bushy plants covered with beautiful white flowers. 4 ft. 35c. each; 90c. for 3.

Hardy Perennial and Biennial Plants

Cushion Chrysanthemums

These are descendants of *Amelia* (*Azaleamum*). The plants grow about 10 to 12 inches high and spread about 2 feet. They bloom quite early and are literally covered with hundreds of flowers until frost.

Bronze Cushion. Deep bronze turning to copper-yellow.

Champion Cushion. Reddish bronze.

Pink Cushion. Light pink. An old favorite.

White Cushion. Opens a delicate pink turning to pure white.

Yellow Cushion. Pure golden yellow; very brilliant.

Convallaria (Lily-of-the-Valley)

For outdoor planting only. Extra fine.

\$1.50 per doz.; \$10.00 per 100

Coreopsis (Tickseed)

Auriculata nana. A pretty little *Coreopsis* with golden yellow flowers that are very attractive. Blooms from May to fall. 12 to 15 in.

Golden Shower. The 1½-inch star-like golden flowers come in profusion from June to frost. 2 ft. 40c. each; \$1.00 for 3.

Perry's Double. A choice double-flowering golden yellow variety. Early summer. 2 ft.

Daisy, Shasta

Double White Swan. Masses of double white flowers on 18 to 24-inch, slender stems.

Mrs. C. L. Bell. An improved variety. Large flowers and long blooming season.

Delphinium (Perennial Larkspur)

Belladonna. Light blue.

Bellamosum. Dark blue.

Chinensis, Tom Thumb. A very pretty variety with feathery foliage. On account of its dwarfness and brilliant blue flowers it is a popular plant for bedding and cut-flowers.

New Giant Pacific Hybrids. This is an outstanding new strain with many shades of huge florets beautifully spaced on strong spikes. Mildew-resistant. The best *Delphinium* plants in existence. 50c. each; \$1.25 for 3.

New Giant Pacific, Pure White. Long spikes of pure white flowers in this fine strain. 50c. each; \$1.25 for 3.

Dianthus (Hardy Pinks)

Beatrix. Clusters of double salmon-pink flowers on 10 to 12-inch stems. May, June.

Bobby. Large flowers of deep pink with crimson centers. 8 in.

Furst Bismarck. Same habit as *Beatrix* with attractive crimson flowers.

Old Spice. Carnation-like salmon-pink flowers; clove-scented. 50c. each; \$1.25 for 3.

Plumarius, Mixed. Single and double flowers. 10 in.

Roy's Hybrids. Lovely pink and red shades. May-June flowering.

White Reserve. Extra-large, double white carnation-like flowers in late spring and early summer. 10 in.

Dicentra (Bleeding-Heart)

Spectabilis. Graceful pink, heart-shaped flowers on long slender stems. Does well in shade. 40c. ea.

Eximia. Fern-like foliage and pink heart-shaped flowers. Partial shade or full sun.

Feverfew

Little Gem. A dwarf variety with double white flowers.

Golden Ball. Fine yellow form of the above.

Gaillardia

Goblin. Especially suitable for the rock-garden being 12 to 16 inches high and covered with bright yellow flowers with deep red zones.

Mr. Sherbrook. Hybrid of *Sun God Improved*. A golden yellow variety with no other color or marking. Large self-colored blooms on stout stems all summer.

New Giant Monarch Strain. Extra-large flowers in beautiful shades.

Ruby. Vivid red flowers free from yellow or brown shading.

Heather (Calluna)

Vulgaris. Lavender-rose. Upright growing variety, 2 to 3 ft.

Vulgaris alba. White Heather.

Vulgaris aurea. Foliage golden in summer and red in winter. Lavender flowers.

Vulgaris rubra. Rosy carmine flowers.

Any of above varieties, 2-yr. plants, 35c. each;

3-yr. 50c.

Helleborus

(Christmas Rose; Lenten Rose)

CULTURE. Grow in a cool, moist, shady place, in soil mixed with leaf-mold and well-rotted manure.

Niger (Christmas Rose). A dwarf-growing, hardy plant, able to withstand temperatures many degrees below zero. Its palm-like leaves are evergreen, and the large, single, bell-like flowers are produced, regardless of cold or snow, during December and January. The blooms often last two months. Plants, 75c. each; \$2.00 for 3.

Orientalis Hybrids. Known as the "Lenten Rose." The flowers range in colors from pale green through white, from pale brown to the deepest tones of chocolate-red. Plants, 75c. each; \$2.00 for 3.

Hibiscus (Rose-Mallow)

New Giant-flowering, Mixed. Shrub-like plants that grow 5 feet high, but die to the ground every winter. They have quantities of extra-large flowers during late summer months.

We also can furnish separate colors—Pink, Red, and White.

Hollyhocks

One of the most showy of all hardy garden plants, producing majestic spikes of large double blossoms, measuring 3 to 4 inches across. Pink, White, Red, Yellow, and Mixed. August, September. 6 to 8 ft.

Iberis (Candytuft)

Little Cushion. A miniature Candytuft growing only 4 inches high. Blooms freely in very early spring.

Sempervirens. Excellent border or rock-plant. Evergreen. White flowers in early spring.

Snowflake. Splendid new *Iberis* with large, pure white flowers. We offer the true stock propagated from cuttings.

Lathyrus (Perennial Pea)

Latifolius, Mixed. Good range of colors. 20c. each; 50c. for 3.

Hardy Perennial and Biennial Plants

Linum (Perennial Flax)

Alpinum. A fine dwarf variety with clear sky-blue flowers. Blooms freely during summer months. 15 in.

Flavum. Lovely golden yellow flowers from late May to July. 12 in.

Mertensia

Virginica (Virginia Bluebells). A foot or two high with dark green foliage and loose panicles of rich blue, rose-tinted flowers in early spring.

Myosotis (Forget-me-not)

Palustris semperflorens. Perpetual-flowering Forget-me-not. Blue with yellow throat. Damp places.

Papaver Orientale (Oriental Poppy)

Beauty of Livermere. Dark crimson with black blotch.

Cavalier. Strong grower and free bloomer. Flowers crinkly, deep scarlet-red.

Fairy. A very lovely pale pink. Good grower and free bloomer.

Gold of Ophir. Golden orange flowers which develop into the nearest yellow of any Oriental Poppy.

Henri Cayeux. The Purple Poppy. Old-rose—unusual color.

Jeanne Mawson. Sparkling geranium-pink.

Joyce. A fine shade of deep rose-pink.

Lachs Konigen. Peach-red, with pink cast.

Lord Lambourne. Scarlet; lacinated petals.

Lula A. Neeley. Brilliant ox-blood-red flowers on erect, stiff stems.

Mrs. Ballego. Big salmon-pink bloom with large black spots at the base.

Mrs. Perry. Orange-apricot. Free bloomer.

Orange Perfection. Strong grower, with orange-tinted flowers.

Perry's White. Satiny white with a crimson-maroon blotch at the base of each petal.

Wurtembergia. Brilliant glowing rose-red; very large and striking.

All above Poppies, 50c. each; 3 of any one variety for \$1.25; \$5.00 per doz.

Bolgiano's Pansy Seed

Roggli Giants. A very select strain noted for its robust habit and early flowering. The extremely large flowers of heavy texture are held well above the foliage on long, strong stems. The color-range is of the rich, dark shades. Seed, pkt. 25c.; $\frac{1}{8}$ oz. \$1.50; $\frac{1}{2}$ oz. \$2.65.

Giant Trimardeaux, Mixed. Beautiful color combinations. Each flower has three blotches of color and attains great size. Seed, pkt. 10c.; $\frac{1}{2}$ oz. 90c.; $\frac{1}{4}$ oz. \$1.50; oz. \$5.00.

Coronation Gold. Award of Merit, All-America Selections, 1938. A really giant golden yellow Pansy. The flowers are round with lightly ruffled edges and have a rather spicy odor. An introduction from Holland. Special pkt. 25c.

Super-Swiss Giant Pansy Plants

A mixture of the finest color combinations and attractive forms of Swiss Giant Pansies. Transplanting plants for setting out this fall for spring blooms. \$1.50 for 50; \$2.25 per 100; \$17.50 per 1000.

Phlox Decussata

One of the most important perennials. Produces large heads of fragrant flowers from early July to September. $1\frac{1}{2}$ to 3 ft.

Africa. Carmine-red; blood-red eye.

Betty Lou. Deep salmon.

Count Zeppelin. White with red eye.

Daily Sketch. Salmon-pink, crimson center.

Enchantress. Bright salmon-pink.

Ethel Pritchard. French mauve.

Harvest Fire. Salmon-orange.

Leo Schlageter. Scarlet-red.

Lillian. Cameo-pink; blue eye.

Mia Ruys. Dwarf. Pure white.

Miss Lingard. Tall. Pure white.

Nordlicht. Rosy pink; red center.

Painted Lady. Silvery pink; red eye.

Rheinlander. Salmon-pink.

Starlight. Violet-red; white center.

Phlox Subulata

(Moss or Mountain Pink)

An excellent plant for the rockery, border, and for carpeting the ground. Covered with masses of blooms during April and May.

Atropurpurea. Brilliant red.

Blue Hill. Lavender-blue.

June Jane. Pure white.

Vivid. Bright pink.

PERENNIAL VINES

BOSTON IVY. Fast-growing. Clings to brick or stone. 50c. each; \$1.25 for 3.

BITTERSWEET (*Celastrus articulatus*). The Oriental variety. Covered with orange-yellow berries in fall. Superior to the usual domestic Ivy. 50c. each.

CLEMATIS paniculata. Strong, rapid growth. Pure white, fragrant flowers. 50c. each; \$1.35 for 3.

CLEMATIS Jackmani. Large, rich purple blossoms. 75c. each.

CLEMATIS, Duchess of Edinburgh. Large, double, elegant white blossoms. 75c. each.

CLEMATIS, Mme. Baron Veillard. Large lavender flowers. 75c. each.

CLEMATIS, Mme. Edouard Andre. Splendid large flowers of a bright rosy carmine color. 75c. each.

ENGLISH IVY. $2\frac{1}{4}$ -in. pot plants, 15c. each; \$1.50 per doz.

POLYGONUM Auberti. (Silver Lace Vine). A fast-growing vine attaining a height of 25 feet. Foamy sprays of flowers in summer and fall. 65c. each; \$1.65 for 3.

WISTERIA sinensis. Produces early in the spring thousands of pendulous clusters of delicate violet-blue blossoms. 2 to 3 ft. 2-yr. plants. 75c. each.

WISTERIA alba. Same as above, only pure white. 75c. each.

GROUND-COVERS

PACHYSANDRA (Japanese Spurge). A trailing plant, 6 to 8 inches high, forming a complete cover of bright, glossy green foliage and small spikes of flowers during May and June. \$1.75 per doz.; \$13.00 per 100.

VINCA minor (Periwinkle; Trailing Myrtle). An excellent dwarf trailing plant for carpeting the ground where it is too shady for other plants to thrive. \$1.50 per doz.; \$10.00 per 100.

OUR FALL COLLECTION

Strong 2-Year-Old
Field-Grown Plants

In this collection we offer six choice modern everblooming Roses which will please the most particular Rose-lover. They all are strong, healthy plants and will produce a great quantity of lovely fragrant blooms in the most popular Rose colors.



- Condesa de Sastago.** Spectacular fragrant flowers of burning copper with a yellow reverse. 85c. each.
Editor McFarland. Long-lasting, perfectly formed blooms of deep pink on fine stems. Slightly fragrant. 85c. each.
Etoile de Hollande. The world's favorite red Rose. Large shapely flowers of rich red. Unforgettable fragrance. 85c. each.

- Mrs. Pierre S. du Pont.** Beautiful flowers of rich deep yellow appear in profusion on low healthy plants. Spicy fragrance. 85c. each.
Mrs. Sam McGredy. Flowers a glorious blend of scarlet and orange and the plants have red canes and thorns and bronzy foliage. Fragrant. 85c. ea.
Sir Henry Segrave. Large blooms of light lemon-yellow. Pleasing lemon fragrance. 85c. each.

SPECIAL OFFER One each of these 6, \$4.60
postpaid for . . .

ROSES for Fall Planting

Our Standard Popular Varieties
Also Some Recent Introductions.
All Everblooming
75c. each; \$6.95 for 10

- Ami Quinard.** Velvety crimson-maroon with soft black lustre.
Betty Uprichard. Copper-red buds, with orange-carmine.
Briarcliff. Fine, handsome flowers of silvery rose-pink.
Caledonia. Large, long-pointed buds with a high center; very fragrant white flowers.
Cathrine Kordes. Large glowing carmine-scarlet blooms with highlights of deep pink; fragrant.
Charles K. Douglas. Bright crimson-scarlet.
Christopher Stone. Scarlet-crimson. Lovely long-pointed buds borne singly on firm stems; very fragrant.
Duchess of Wellington. Enormous, tapering buds of golden orange slowly opening to very large saffron-colored blooms; fragrant.
Edith Nellie Perkins. Salmon-pink, flushed orange.
Golden Dawn. Well-formed; sweet-scented; large; double; sunflower-yellow.
Joanna Hill. Deep creamy yellow. Beautiful long-pointed buds.
Kaiserin Auguste Viktoria. Pearly white, opening to large double white blooms.
Lady Ashtown. Soft pink. Large, free-blooming and vigorous.

- Margaret McGredy.** Orange-scarlet.
Mme. Butterfly. Pink and gold.
Mme. Jules Bouche. White shaded primrose or pale blush at center.
Mrs. Erskine Pembroke Thom. Long-pointed yellow buds; canary-yellow blooms.
President Herbert Hoover. A lovely blend of orange and pink.
Radiance. Brilliant rose-pink.
Red Radiance. Deep rose-red.
Talisman. Pink, gold and yellow.

Climbing Varieties
75c. each; \$6.95 for 10

- Dr. W. Van Fleet.** Pale pink buds and flowers borne on individual stems.
Emily Gray. Beautiful pale orange-yellow; long-pointed buds.
Kaiserin Auguste Viktoria. Double; pure white, with light lemon center. Everblooming.
Mary Wallace. A sturdy grower with brilliant rose-pink flowers. Early.
Cl. President Hoover. A lovely blend of orange and pink. Everblooming.
Paul's Scarlet Climber. Clear vivid scarlet.
Prosperity. White. Repeat-blooming.
Silver Moon. Large creamy white flowers with brilliant yellow centers.
Talisman. Gold, apricot-yellow, deep pink and old-rose. Everblooming.
Zephirine Drouhin. Vivid pink.

Hardy Flowering SHRUBS

Prices quoted include delivery in Washington, D. C., and vicinity but due to war conditions we may be unable to deliver for the duration. We do not ship Nursery Stock. Because there are so many conditions upon which successful growth is dependent, and over which we have no control, we cannot guarantee our Nursery Stock in any way whatsoever.

ALTHÆA frutex (Rose of Sharon). Double blooms from July until October. Pink, White, and Violet-Red. 3 to 4 ft., 90c. each. 4 to 5 ft., \$1.35.

BEAUTY BUSH (*Kolkwitzia amabilis*). Pink flowers in early May. 3 to 4 ft., \$1.00 each. 4 to 5 ft., \$1.50.

BUDDLEIA, Charming (Butterfly Bush). *New*. Pink blooms all summer. 2-yr. plants, \$1.35 each.

B., Ile de France (Butterfly Bush). *New*. Long spikes of brilliant rosy violet-purple flowers all summer. 3-yr. plants, 90c. each.

CALYCANTHUS floridus (Sweet-smelling Shrub). 3 to 4 ft., \$1.00 each.

CYDONIA japonica. Scarlet flowers in early spring. 18 to 24 in., \$1.00 each. 2 to 3 ft., \$1.35.

DEUTZIA, Pride of Rochester. Large, double white flowers tinged with rose. 3 to 4 ft., 90c. each. 4 to 5 ft., \$1.35.

FORSYTHIA intermedia spectabilis (Golden Bell). Bright yellow bell-like flowers in early spring. Strong, erect habit. 3 to 4 ft., 90c. each. 4 to 5 ft., \$1.35.

F. suspensa (Weeping Golden Bell). Tall shrub of willowy growth. Graceful, arching branches covered with golden bells in early spring. 3 to 4 ft., 90c. each. 4 to 5 ft., \$1.35.

HYDRANGEA arborescens grandiflorum. White flowers in almost round heads. Early. 3 to 4 ft., \$1.00 each. 4 to 5 ft., \$1.35.

H. otaksa. Blue. 15 to 18 in., \$1.00 each. 18 to 24 in., \$1.50.

H., Peegee. The old-time variety. 2 to 3 ft., \$1.00 each. 3 to 4 ft., \$1.35.

LILAC, Old-fashioned Purple. 2 to 3 ft., \$1.00 each. 3 to 4 ft., \$1.50.

LILACS, French Hybrids. Larger panicles and richer coloring than the old-fashioned varieties. Plant in fall for spring bloom.

Marie Legraye. Pure white.

Mme. Lemoine. Large; double; white.

President Grevy. Light blue.

Souv. de Ludwig Spaeth. Dark purple.

Above 4 varieties, 2 to 3 ft., \$1.00 each
3 to 4 ft., \$1.65. 4 to 5 ft., \$2.25

PEARL BUSH (*Exocorda racemosa*). Spirea-like shrub with racemes of 2-inch white flowers in spring. 3 to 4 ft., \$1.00 each. 4 to 5 ft., \$1.50.

PHILADELPHUS coronarius (Sweet Mock-Orange). 3 to 4 ft., \$1.00 each. 4 to 5 ft., \$1.35.

SNOWBALL (*Viburnum Opulus sterile*). Old-time variety with large white flowers in balls in May or June. 3 to 4 ft., \$1.00 each. 4 to 5 ft., \$1.35.

SPIRÆA, Anthony Waterer. Crimson flowers all summer. Dwarf. 15 to 18 in., 90c. each. 18 to 24 in., \$1.25.

S. prunifolia. White flowers. Early. 3 to 4 ft., \$1.00 each. 4 to 5 ft., \$1.35.

S. Thunbergi. Fine-leaved foliage; arching branches. Long sprays of white flowers in early spring. 18 to 24 in., 90c. each. 2 to 3 ft., \$1.25. 3 to 4 ft., \$1.65.

S. Vanhouttei. The most showy variety. May, June. 3 to 4 ft., \$1.00 each. 4 to 5 ft., \$1.35.

WEIGELA rosea. Beautiful, free-blooming shrub much used in borders and as specimen plants for the lawn. Pink flowers in May or June. 3 to 4 ft., \$1.25 each. 4 to 5 ft., \$1.35.

W., Eva Rathke. One of the most valuable. Flowers deep carmine-red. The mature plant reaches a height of 5 feet and is covered with rich green foliage. June, July. 3 to 4 ft., \$1.25 each. 4 to 5 ft., \$1.65.

HEDGE PLANTS

BARBERRY, Green-Leaf. The best and most practical hedge plant. It also makes a good footing or base planting near the house, or as a border plant in front of tall-growing shrubs. They can be allowed to grow naturally or pruned into any hedge form desired. 12 to 15 in., \$1.50 for 10; \$12.50 per 100. 15 to 18 in., \$2.25 for 10; \$20.00 per 100. 18 to 24 in., \$3.00 for 10; \$27.50 per 100.

PRIVET, California. The best-known hedge plant. Dark green foliage which remains on the plant until midwinter. Well-branched, heavy stock, 18 to 24 in., \$1.00 for 10; \$8.00 per 100. 24 to 30 in., \$1.50 for 10; \$12.50 per 100.



BOLGIANO'S DWARF EVERGREENS

ARBORVITÆ, Globe. A round, compact-growing evergreen with dense foliage. 12 to 15 in., \$1.50 each. 15 to 18 in., \$2.00.

JUNIPERUS chinensis Pfitzeriana. Low-spreading, dark green branches. 18 to 24 in., \$3.75 each. 2 to 2½ ft., \$4.50.

J. communis depressa plumosa (Purple Spreading Juniper). 12 to 15 in., \$1.50 each. 15 to 18 in., \$2.00.

PINE, Mugho (Dwarf Pine). Short, thick foliage on compact plant. Leaves slightly twisted. 15 to 18 in., \$2.50 each. 18 to 24 in., \$3.50.

YEW, Spreading (*Taxus cuspidata*). A very hardy tree and a valuable addition to the home grounds. 18 to 24 in., \$4.50 each. 2 to 2½ ft., \$6.00.



BOLGIANO'S TALL EVERGREENS

ARBORVITÆ, American. Tall, rapid grower. 2 to 2½ ft., \$1.75 each. 3 to 4 ft., \$3.50. 4 to 5 ft., \$5.00. 5 to 6 ft., \$6.50.

A., Pyramidal. Darker green, denser foliage and more slender of shape. 2 to 3 ft., \$2.50 each. 3 to 4 ft., \$3.75.

HEMLOCK. Best evergreen for shade. 15 to 18 in., \$1.75 each. 18 to 24 in., \$2.25. 2 to 3 ft., \$3.50. 3 to 4 ft., \$4.50.

JUNIPER, Irish. Tall, narrow spires of blue-green foliage. Fast-growing. 2 to 3 ft., \$2.25 each. 3 to 4 ft., \$3.50.

RETINOSPORA plumosa. Graceful plume-like foliage of a pretty green. 18 to 24 in., \$1.75 each. 2 to 2½ ft., \$2.50. 3 to 4 ft., \$3.75.

R. plumosa aurea. Golden-tipped. 18 to 24 in., \$1.75 each. 2 to 2½ ft., \$2.50. 3 to 4 ft., \$3.75.

SPRUCE, Norway. Dark green, handsome tree reaching 30 to 50 feet. Good for hedges. 18 to 24 in., \$2.00 each. 2 to 3 ft., \$3.25. 3 to 4 ft., \$4.50.

YEW, Upright (*Taxus cuspidata capitata*). A fine, fast-growing evergreen. 15 to 18 in., \$2.50 each. 18 to 24 in., \$3.25. 3 to 4 ft., \$4.25.

ORNAMENTAL and SHADE TREES

CRAB, Flowering (*Malus floribunda*). 4 to 5 ft., \$3.75 each. 5 to 6 ft., \$5.25.

DOGWOOD, Pink-flowering. 2 to 3 ft., \$2.50 each. 3 to 4 ft., \$4.25. 4 to 5 ft., \$6.50.

D., White-flowering. 2 to 3 ft., \$2.00 each. 3 to 4 ft., \$2.75.

ELM, American. 8 to 10 ft., \$2.25 each. 10 to 12 ft., \$4.00.

E., Chinese. Broader base than American. Foliage small and dense. 6 to 8 ft., \$2.25 each. 8 to 10 ft., \$3.50.

MAGNOLIA, Saucer (*Magnolia Soulangeana*). Flowers white inside flushed with pink outside. 2 to 3 ft., \$3.50 each. 3 to 4 ft., \$5.00.

Magnolia, Star (*M. stellata*). Pure white star-like flowers. 18 to 24 in., \$3.75 each. 2 to 2½ ft., \$5.25.

MAPLE, Norway. 8 to 10 ft., \$3.50 each. 10 to 12 ft., \$5.00.

M., Silver. 6 to 8 ft., \$1.75 each. 8 to 10 ft., \$2.50. 10 to 12 ft., \$4.00.

OAK, Red. A stately tree with beautiful fall coloring. 6 to 8 ft., \$4.50 each. 8 to 10 ft., \$6.00.

POPLAR, Lombardy. 6 to 8 ft., \$1.00 each; \$8.50 for 10. 8 to 10 ft., \$1.50; \$10.00 for 10. 10 to 12 ft., \$2.00.

WILLOW, Weeping. 6 to 8 ft., \$2.50 each. 8 to 10 ft., \$3.75.

Broad-Leaved EVERGREEN SHRUBS

ABELIA grandiflora (Bush Arbutus). Leaves dark green and glossy. Flowers white, funnel-shaped, tinged with pink, delicately sweet scented, borne in clusters from early spring until late autumn. 15 to 18 in. \$1.00 each. 18 to 24 in., \$1.50.

AZALEA amœna (Purple Azalea). A solid mass of flowers in the spring. Bronzy fall foliage. 8 to 10 in., \$1.65 each. 10 to 12 in., \$2.00.

A., Hinodegiri. Brilliant scarlet. 6 to 8 in., \$1.65 each. 8 to 10 in., \$2.25.

A., Snow. Pure white. 8 to 10 in., \$2.00 each. 10 to 12 in., \$2.50.

BOXWOOD, American (*Buxus sempervirens*). 8 to 10 in., 75c. each. 10 to 12 in., 90c.

B., Old English (*B. suffruticosa*). 4 to 6 in., 40c. each. 6 to 8 in., 60c. 8 to 10 in., 90c.

LAUREL, Mountain. 18 to 24 in., \$2.25 each. 2 to 2½ ft., \$3.00.

RHODODENDRON carolinianum. Pink. 18 to 24 in., \$2.50 each. 2 to 3 ft., \$4.00.

R. catawbiense. Large, purple flowers. 18 to 24 in., \$2.50 each. 2 to 3 ft., \$4.00.

R. maximum. Large white flowers. 18 to 24 in., \$2.50 each. 2 to 3 ft., \$4.00.

FRUITS for THE HOME GARDEN

A few fruit trees will be welcome on your grounds the year round. First of all, you plant them for their fruit, of course, and in these food-rationed days anything you can grow for the family larder is so much to the good. But your fruit trees will also give you springtime bloom and summer shade—a real investment in pleasure and profit.

Apple Trees

4 to 6 ft., \$1.00 each

WINTER VARIETIES

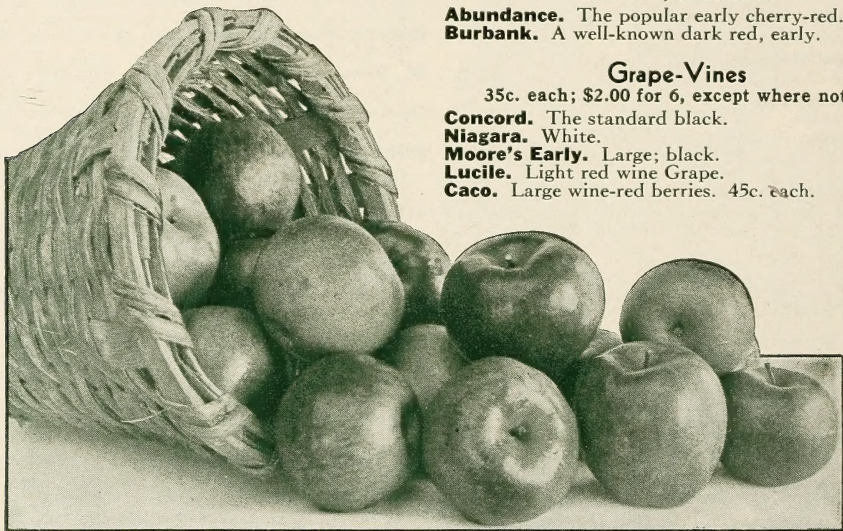
Delicious **York Imperial**
Stayman (Improved Winesap).

AUTUMN VARIETIES

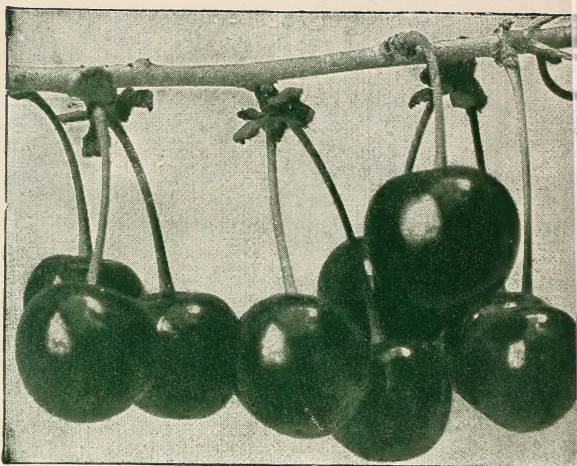
Grimes Golden. Good size; yellow.

SUMMER VARIETIES

Early Harvest. Medium. Pale yellow.
Yellow Transparent. Earliest. White skin.



STAYMAN APPLES



EARLY RICHMOND CHERRIES

Pear Trees

5 to 6 ft., \$1.25 each

Bartlett. The best, large eating Pear.
Seckel. Small, sweet. Very popular.

Cherry Trees

5 to 6 ft., \$1.25 each

Early Richmond. Sour, light red fruit.
Montmorency. Sour variety.
Napoleon. Large; sweet. Midseason.
Tartarian. Large, sweet, black Cherries.

Peach Trees

4 to 5 ft., \$1.00 each

Belle of Georgia. Large; white flesh.
Carman. White flesh. Semi-clingstone.
Elberta. Large; yellow flesh. Freestone.

Plum Trees

5 to 6 ft., \$1.25 each

Abundance. The popular early cherry-red.
Burbank. A well-known dark red, early.

Grape-Vines

35c. each; \$2.00 for 6, except where noted

Concord. The standard black.
Niagara. White.
Moore's Early. Large; black.
Lucile. Light red wine Grape.
Caco. Large wine-red berries. 45c. each.

FERTILIZERS • Insecticides, etc.

ZOTOX Crab Grass Killer

ZOTOX—A NEW DISCOVERY

The development of Zotox, a concentrated liquid chemical, introduces a new and revolutionary method of controlling crab grass. When diluted with water and applied as a spray, Zotox not only kills the plant of crab grass—it also devitalizes the seeds—thus checking reinfestation. This double action is what makes Zotox so effective.



TRY THIS PROVED LAWN PROGRAM

1. Destroy crab grass with Zotox Crab Grass Killer.
2. Fertilize the lawn with a balanced plant-food.
3. Sow Bolgiano's Capitol Park Grass Seed.

Zotox is sold in four convenient sizes:

8-oz. Bottle \$1.00
16-oz. Bottle \$1.50

32-oz. Bottle \$2.50
5-lb. Bottle \$4.50

Bone Meal

(**Bolgiano's Gold Tag**). 25 lbs. \$1.00;
50 lbs. \$1.85; 100 lbs. \$3.25.

Wizard Brand Sheep Manure Wizard Brand Cow Manure

"Makes Nature Hustle" and builds up your soil at the same time. 10 lbs. 50c.; 25 lbs. \$1.05; 50 lbs. \$1.75; 100 lbs. \$3.15.

Michigan Peat Moss

Maintains moisture content in soil. Use for storing bulbs and tubers over dormant season; mulching flower and vegetable beds, for making lawns and keeping them in condition, and for many other purposes. \$2.00 per 100 lbs.

Hyper-Humus Nature's Own Soil Enricher

An ideal top-dressing—makes heavy soils light and porous, light soils heavy. No odor. No weeds. 25 lbs. 50c.; 100 lbs. \$1.75; ton \$25.00.

Well-rotted Cow Manure

Just the kind to use around your rose bushes and other plants this fall. 75c. per bus.

DRICONURE

Three-quarters manure and one-quarter peat, both for soil-improvement and fertilizer together. 50-lb. bag \$2.00.

Rootone

The Hormone "Powder" for Rooting Cuttings, for Dusting Seeds and Bulbs. Trial size 25c.; 2-oz. jar \$1.00; 1-lb. can \$5.00.

Transplantone

A vitamin-hormone stimulant for plants. Invigorates old roots, multiplies new roots, reduces wilting, reduces loss in transplanting. Trial pkt. 25c.; 3-oz. can \$1.00; 1-lb. can \$4.00.

JAPIDEMIC

Milky Disease Spore Dust Controls Japanese Beetles

Treat your soil against these pests and save your turf from ruin. Will remain active in the soil for many years to kill the Japanese Beetle grubs. Japidemic is harmless to plants, human beings, and animals when used according to directions. One pound treats 4000 square feet. Ask about Japidemic now! Lb. \$4.50.

Write for prices on larger quantities



TULIPS *to Plant this Fall*

F. W. BOLGIANO & CO.
WASHINGTON, D. C.
